

# E-Z LOAD™ HISTOSETTE® II

Cassettes for Automated  
Labeling Instruments



Another Innovation by

**Simport**

# M485SL & M486SL

## E-Z LOAD™ HISTOSETTE® II

Suitable for printer hoppers accepting plastic sleeves

### CASSETTES IN PLASTIC SLEEVES

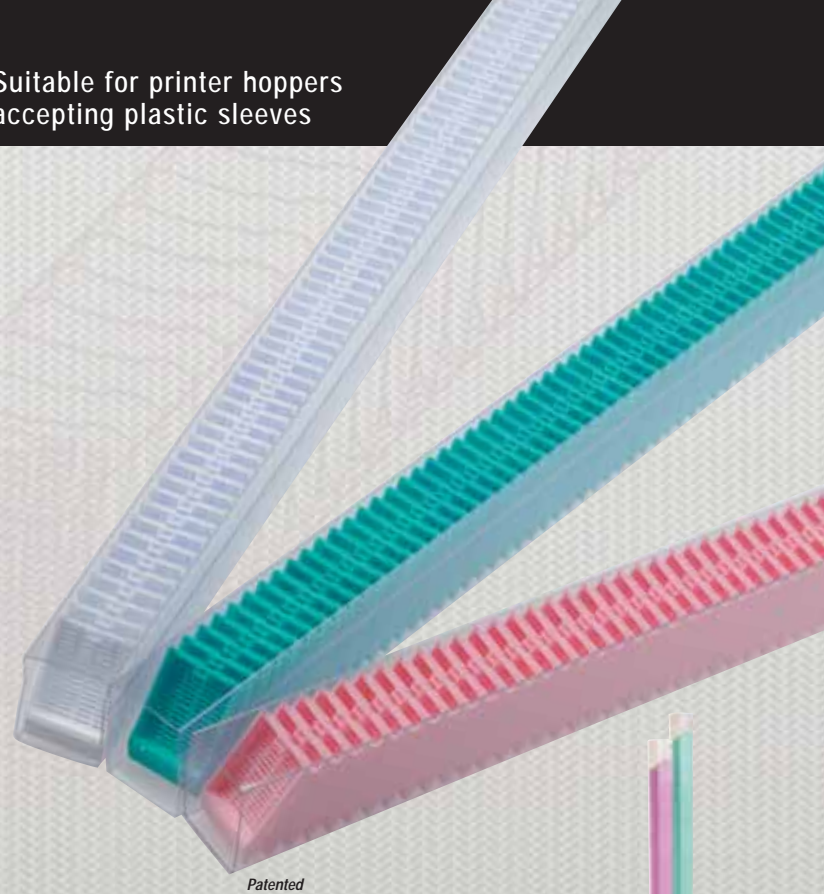
#### Made of acetal polymer

Suitable for hoppers accepting plastic sleeves, these cassettes will load in cassette labeling instruments in one simple operation. Save time and money with these convenient stacks of 75 unique **Simport** cassettes. No more manual insertion, one cassette at a time. Just load the cassette sleeve in the hopper and you are ready for printing.

These specially designed cassettes belong to the world-wide known **Simport HISTOSETTE® II Series**. Molded from a special high density polymer, these cassettes keep specimens safely submerged in liquid and are totally resistant to the chemical action of histological solvents. The efficient flow-through slots maximize fluid exchange and ensure proper drainage.

Two types of cassettes are offered in order to suit your particular needs: a regular tissue cassette and a biopsy model designed to hold small biopsy samples securely during the embedding process. Anterior printing area is at a 45° angle, offering an unobstructed view of the writing surface and making the cassette perfectly suitable to be used with cassette labeling instruments.

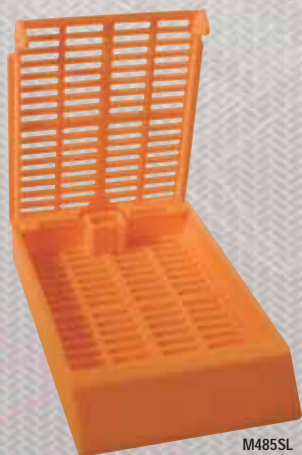
The one-piece disposable plastic cover eliminates the need for reusable steel lids. It can be opened and closed as often as necessary and it always relocks without danger of specimen loss. Cassettes are packaged in sleeves of 75. Each case contains 10 sleeves and 750 covers. Choose between these 11 non-cytotoxic, non-metallic popular colors.



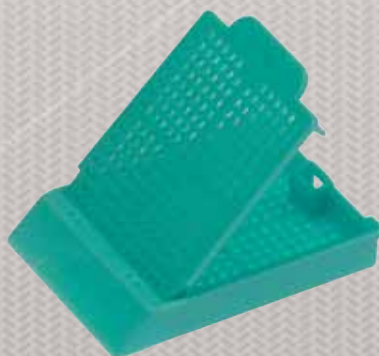
Patented

Available worldwide. For USA users, please contact a **Simport Customer Service Representative.**

Save time and money with these convenient stacks of 75 unique **Simport** cassettes.



M485SL



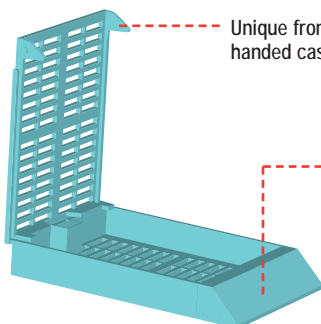
M486SL

### TISSUE AND BIOPSY CASSETTES

(In stacks of 75)

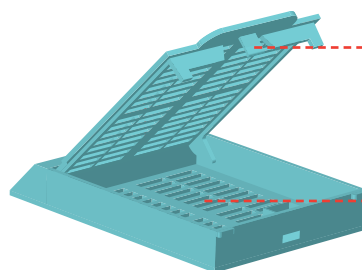
Tissue Cassette Cat. #	Biopsy Cassette Cat. #	Color	Qty/Cs
M485-2SL	M486-2SL	White	750
M485-3SL	M486-3SL	Pink	750
M485-4SL	M486-4SL	Green	750
M485-5SL	M486-5SL	Yellow	750
M485-6SL	M486-6SL	Blue	750
M485-7SL	M486-7SL	Peach	750
M485-8SL	M486-8SL	Tan	750
M485-9SL	M486-9SL	Gray	750
M485-10SL	M486-10SL	Lilac	750
M485-11SL	M486-11SL	Orange	750
M485-12SL	M486-12SL	Aqua	750

### ANATOMY OF A HISTOSETTE® II



Unique front hinge design allows single handed cassette manipulation.

Unobstructed front writing surface sloped at 45° makes the cassette compatible with most automated cassette labeling machines



Back mounted locking device securely holds the lid in place and will never open during processing.



Efficient flow-through slots in lid and base maximize fluid exchange, thereby ensuring proper drainage.

# M482 & M483

## E-Z LOAD™ HISTOSETTE® II

### CASSETTES FOR AUTOMATED LABELING INSTRUMENTS

Made of acetal polymer

This newly patented stack of cassettes allows you to load the Micro Writer® and Shur/Mark® Cassette Labeling Instruments in one simple operation. Save time and money with these convenient stacks of 50 unique **Simport** cassettes. No more manual insertion, one cassette at a time. Just load the stack in the hopper, cut and remove the holding tie and you are ready for printing.

These specially designed cassettes belong to the world-wide known **Simport HISTOSETTE® II** design. Molded from a special high density polymer, these cassettes keep specimens safely submerged in liquid and are totally resistant to the chemical action of histological solvents. The efficient flow-through slots maximize fluid exchange and ensure proper drainage.

Two types of cassettes are offered in order to suit your particular needs: a regular tissue cassette and a biopsy model designed to hold small biopsy samples securely during the embedding process.

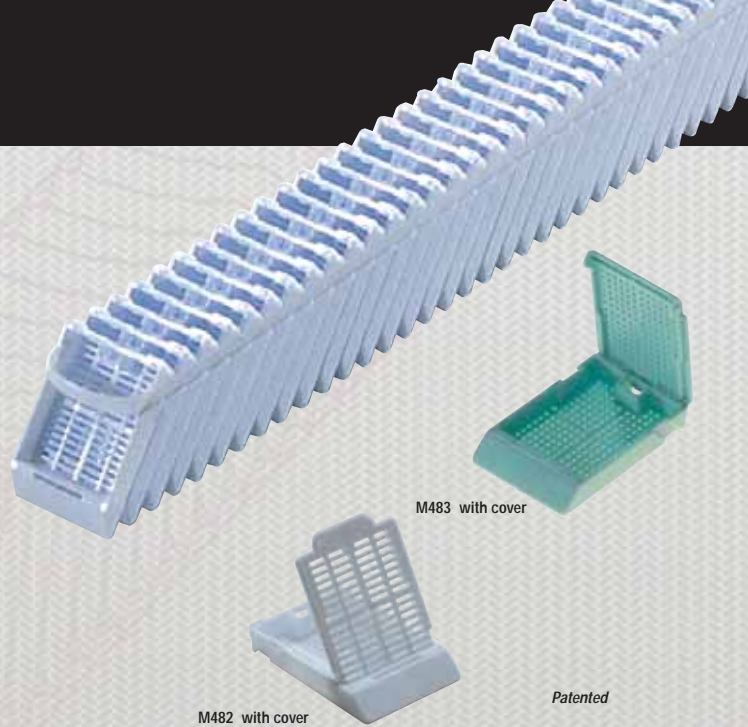
Anterior printing area is at a 45° angle, offering an unobstructed view of the writing surface and making the cassette perfectly suitable to be used with cassette labeling instruments.

Two types of lids are available. The one-piece disposable plastic cover eliminates the need for reusable steel lids. It can be opened and closed as often as necessary and it always relocks securely without danger of specimen loss. Choose between these 11 non-cytotoxic, non-metallic popular colors. Cassettes are packaged in stacks of 50. Each case contains 2 boxes of 20 stacks.

Order cassette bases and covers separately.



*No more manual insertion, one cassette at a time.*



M482 with cover

M483 with cover

Patented

TISSUE CASSETTES (In stacks of 50)			
Base Cat. #	Cover Cat. #	Color	Qty/Cs
M482-2BA	M482-2LI	White	2000
M482-3BA	M482-3LI	Pink	2000
M482-4BA	M482-4LI	Green	2000
M482-5BA	M482-5LI	Yellow	2000
M482-6BA	M482-6LI	Blue	2000
M482-7BA	M482-7LI	Peach	2000
M482-8BA	M482-8LI	Tan	2000
M482-9BA	M482-9LI	Gray	2000
M482-10BA	M482-10LI	Lilac	2000
M482-11BA	M482-11LI	Orange	2000
M482-12BA	M482-12LI	Aqua	2000

BIOPSY CASSETTES (In stacks of 50)			
Base Cat. #	Cover Cat. #	Color	Qty/Cs
M483-2BA	M483-2LI	White	2000
M483-3BA	M483-3LI	Pink	2000
M483-4BA	M483-4LI	Green	2000
M483-5BA	M483-5LI	Yellow	2000
M483-6BA	M483-6LI	Blue	2000
M483-7BA	M483-7LI	Peach	2000
M483-8BA	M483-8LI	Tan	2000
M483-9BA	M483-9LI	Gray	2000
M483-10BA	M483-10LI	Lilac	2000
M483-11BA	M483-11LI	Orange	2000
M483-12BA	M483-12LI	Aqua	2000

### HOW TO INSERT E-Z LOAD™ HISTOSETTE® II CASSETTES

- Insert stack of cassettes from top or bottom, depending on type of hopper.

Load from top

Plastic release mechanism

Load from bottom

Metal release mechanism
- Cut plastic tie, lift and discard while holding cassettes in place with forefinger.
- Place hopper in labeling instrument.

### HOW TO HANDLE M482 and M483 HISTOSETTE® II CASSETTES AFTER PRINTING

#### HOW TO INSTALL COVER

Insert vertically until hinges click firmly into slots in front of cassette.

Cover can also be inserted at an angle.

Press down on back tab.

#### HOW TO REMOVE COVER

Lift tab at the back of cassette with forefinger while depressing the center of lid with thumb.

To remove the cover, pivot the lid forward and it will disconnect automatically.

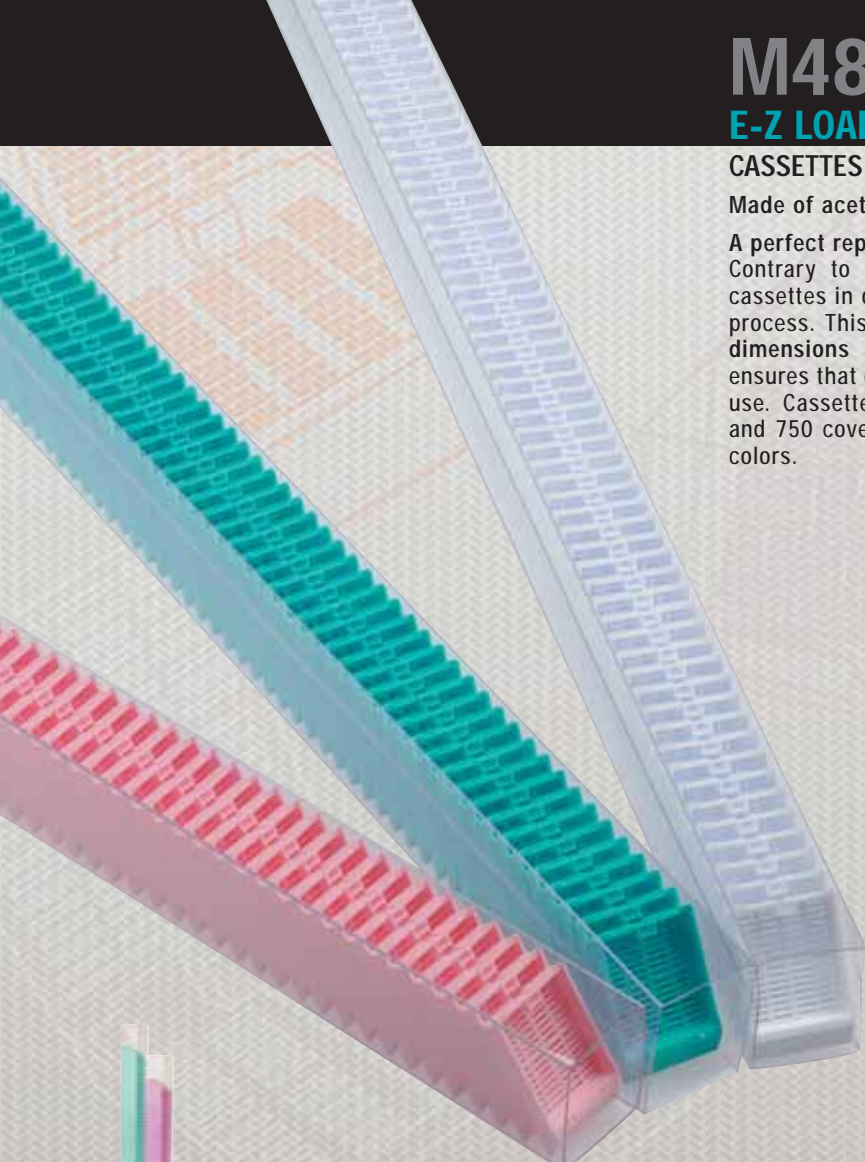
# M485SL2 & M486SL2

## E-Z LOAD™ HISTOSETTE® II

### CASSETTES IN PLASTIC SLEEVES

Made of acetal polymer

A perfect replacement to cardboard sleeves used in some cassette labelers. Contrary to cardboard sleeves, the transparent sleeve allows viewing of cassettes in order to confirm there is no jam in the sleeve during the printing process. This plastic sleeve is similar to the preceding one but the outside dimensions are identical to the cardboard one. A smooth inside finish ensures that cassettes will never jam in the sleeve while cassette labeler is in use. Cassettes are packaged in stacks of 75. Each case contains 10 sleeves and 750 covers. Choose between these 11 non-cytotoxic, non-metallic popular colors.



#### TISSUE AND BIOPSY CASSETTES

(In stacks of 75)

Tissue Cassette Cat. #	Biopsy Cassette Cat. #	Color	Qty/Cs
M485-2SL2	M486-2SL2	White	750
M485-3SL2	M486-3SL2	Pink	750
M485-4SL2	M486-4SL2	Green	750
M485-5SL2	M486-5SL2	Yellow	750
M485-6SL2	M486-6SL2	Blue	750
M485-7SL2	M486-7SL2	Peach	750
M485-8SL2	M486-8SL2	Tan	750
M485-9SL2	M486-9SL2	Gray	750
M485-10SL2	M486-10SL2	Lilac	750
M485-11SL2	M486-11SL2	Orange	750
M485-12SL2	M486-12SL2	Aqua	750



*These E-Z LOAD™ plastic sleeves are a perfect alternative to cardboard sleeves.*



The transparent sleeve allows viewing of cassettes in order to confirm there is no jam in the sleeve during the printing process.

### HOW TO HANDLE M485 and M486 HISTOSETTE® II CASSETTES AFTER PRINTING

#### HOW TO INSTALL COVER



Insert vertically until hinges click firmly into slots in front of cassette.



Cover can also be inserted at an angle.



Press down on back tab.

#### HOW TO REMOVE COVER



Lift tab at the back of cassette with forefinger while depressing the center of lid with thumb.



To remove the cover, pivot the lid forward and it will disconnect automatically.