

Simport®

Canadian and Family Owned Since 1975

Microbiology Collection



www.simport.com



D210 Sterile Petri Dishes

Made of polystyrene

Simpport® Petri dishes are available in a variety of shapes and sizes for use in routine procedures and with automated equipment. Economical, optically clear dishes are precision-molded from biomedical grade polystyrene so cultures are clearly visible without distortion. Dishes are packaged in heavy-wall polyethylene sleeves. **Not for tissue culture applications.**

Cat. #	Model (mm)	Actual Dim.(mm)	Vol. (ml)	Qty/Sleeve	Qty/Cs
D210-7	100 x 20	90 x 20	100	20	500
D210-7WL	100 x 20	90 x 20	100	20	500
D210-8	100 x 25	90 x 25	125	20	500
D210-8R	100 x 25	90 x 25	125	20	500
D210-13	60 x 15	55 x 13	28	20	500
D210-14	50 x 9	50 x 9	12	20	500
D210-15	35 x 10	35 x 10	9	20	500

D210-7

Commonly referred to as a 100 mm x 20 mm dish

For unimpaired observation of specimen growth with raised straight ridge around top for stable stacking.

D210-7WL

Commonly referred to as a 100 mm x 20 mm dish

This dish has three venting ribs into the underside of the lid to prevent condensation build-up.

D210-8

Commonly referred to as a 100 mm x 25 mm dish

Accommodates deeper fills for longer culture periods. Used for fungal cultures, plant propagation. This dish has three venting ribs into the underside of the lid to prevent condensation build-up.

D210-8R

Commonly referred to as a 100 mm x 25 mm dish

Similar to D210-8 but with non-vented lid having a raised straight ridge around top for stable stacking.

D210-13

Commonly referred to as a 60 mm x 15 mm dish

For use whenever a small quantity of culture is desirable. For unimpaired observation of specimen growth with raised straight ridge around top for stable stacking. This dish has three venting ribs into the underside of the lid to prevent condensation build-up.

D210-14

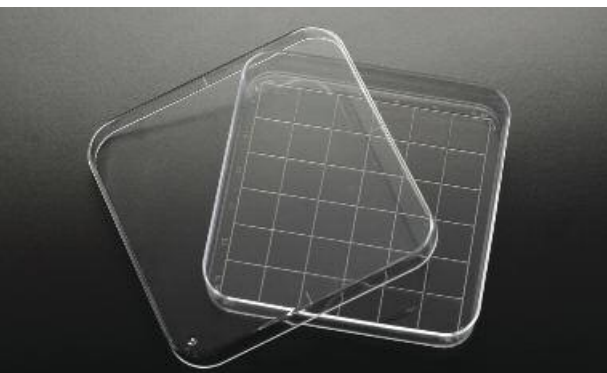
Commonly referred to as a 50 mm x 9 mm dish

Box type dish, for classroom studies, water studies, culturing of mycobacteria, aerosol testing, membrane filter and immunodiffusion techniques. Tight lid prevents sample dehydration.

D210-15

Commonly referred to as a 35 mm x 10 mm dish

Selected for small quantities of culture media. For unimpaired observation of specimen growth with raised straight ridge around top for stable stacking. This dish has three venting ribs into the underside of the lid to prevent condensation build-up.

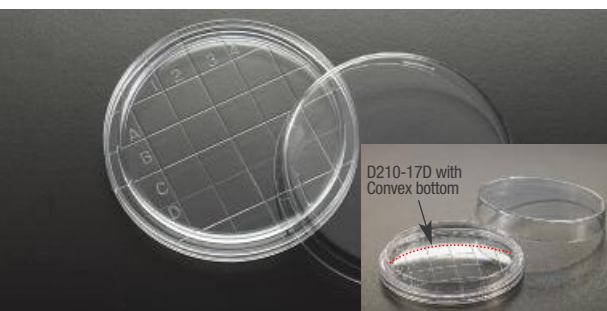


D210-16 Square Petri Dish with grid

Made of polystyrene

Free from optical distortion and sterile. These dishes are ideal for phage typing, susceptibility testing, plate counts, and probe assays. Each 13 mm grid is marked numerically in one direction and alphabetically in the other. This dish has four venting ribs into the underside of the lid to prevent condensation build-up. The Grid is etched on the outer bottom part of the base.

Cat. #	Model (mm)	Actual Dim. (mm)	Vol. (ml)	Qty/Sleeve	Qty/Cs
D210-16	100 x 15	90 x 15	110	10	500



D210-17 Contact Plates

Made of polystyrene

These dishes are free from optical distortion and are sterile. The grid is 10 x 10 mm with numbered and lettered squares to facilitate counting and to locate colonies. The -17D model is designed with a convex bottom to save on culture medium.

Cat. #	Actual Dim. (mm)	Vol. (ml)	Qty/Sleeve	Qty/Cs
D210-17	60 x 15	20	20	500
D210-17D	60 x 15	15	20	500



D210-18 Absorbent Pad Petri Dishes

Made of polystyrene

These 50 x 9 mm sterile Petri dishes with absorbent pads are ideal for culturing micro-organisms on either agar or broth based media. Designed to accommodate 47 mm diameter membrane filters. These dishes are stackable and have squared off edges on both the top and bottom which provide convenient grips for one handed opening. The snug fitting top ensures that neither the absorbent pad nor the agar media will dry out during incubation. A frosted area on top of lid permits labeling.

Cat. #	Actual Dim. (mm)	Style	Qty/Sleeve	Qty/Cs
D210-18A	50 x 9	Without Pads	20	500
D210-18B	50 x 9	With Pads	20	500

L200 INO-LOOP™

Inoculating Loops and Needles

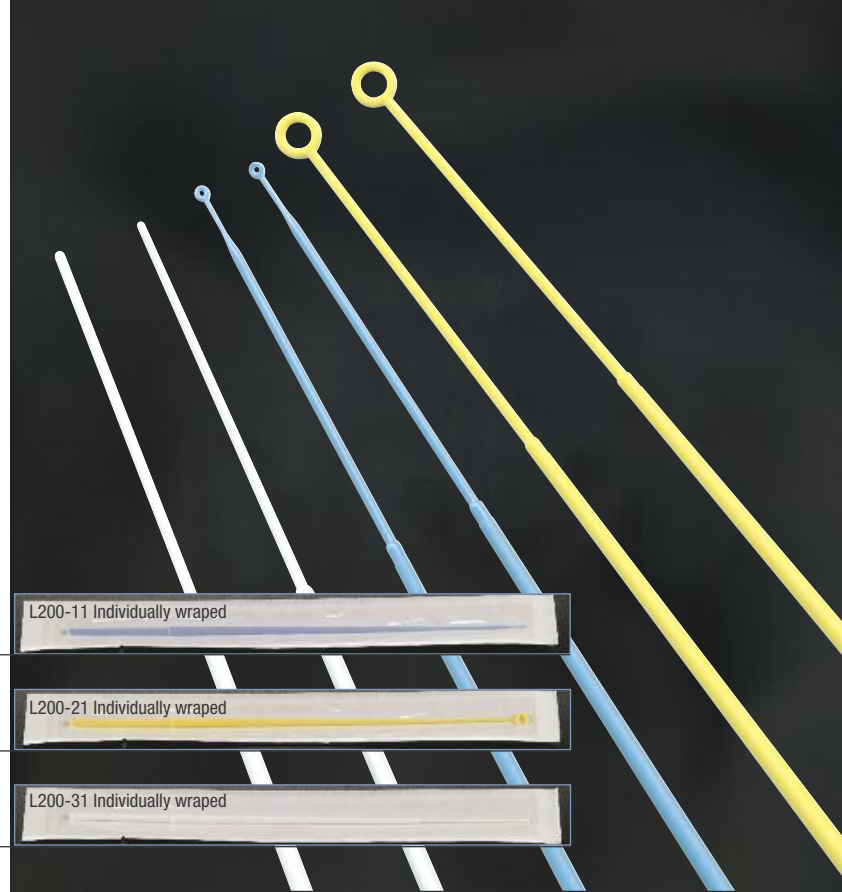
Made of high impact polystyrene

Loops and needles are smooth and flexible to facilitate uniform streaking without damaging the gel surface. Needles are straight and suitable for removal of specimens of single colonies. Packed sterile in safe, tamperproof, zip-seal resealable bags.

Disposable inoculating loops and needles do not require flaming and thus eliminate the risk of infection due to aerosol formation of pathogenic substances.

Cross contamination due to improper sterilization is eliminated. They can be used under hoods without danger, and are color-coded for ease of size identification. Certificate of conformity available upon request. Total length: 22.7 cm

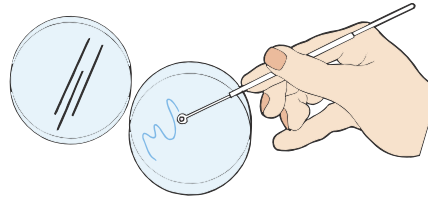
Cat. #	Description	Color	Qty/Pk	Qty/Cs
L200-1	Loop 1µl	Blue	25	1000
L200-1A	Loop 1µl	Blue	10	1000
L200-11	Loop 1µl	Blue	1	250
L200-2	Loop 10µl	Yellow	25	1000
L200-2A	Loop 10µl	Yellow	10	1000
L200-21	Loop 10µl	Yellow	1	250
L200-3	Needle	White	25	1000
L200-3A	Needle	White	10	1000
L200-31	Needle	White	1	250



PACKAGING for L200-1, -1A, -2, -2A, -3 and -3A



Tamperproof tear off seal ensures sterile product integrity
 Bag can be resealed as often as needed



Smooth loop surface provides uniform and gentle streaking.

T405 & T406

Cultubes™ Sterile Culture Tubes

Made of polystyrene or polypropylene

For users who prefer a more compact packaging with tubes oriented horizontally. Tubes are placed in a convenient space saving plastic tray. State-of-the-art packaging keeps your tubes neatly aligned for easing manipulation.



Cat. #	Size (mm)	Material	Description	Qty/Tray	Qty/Cs
T405-1	12 x 75	Polystyrene	With cap	1	500
T405-2	12 x 75	Polystyrene	With cap	25	500
T405-3	12 x 75	Polystyrene	With cap	125	1000
T405-6	12 x 75	Polystyrene	Without cap	125	1000
T405-1A	12 x 75	Polypropylene	With cap	1	500
T405-2A	12 x 75	Polypropylene	With cap	25	500
T405-6A	12 x 75	Polypropylene	Without cap	125	1000

Cat. #	Size (mm)	Material	Description	Qty/Tray	Qty/Cs
T406-1	17 x 95	Polystyrene	With cap	1	500
T406-2	17 x 95	Polystyrene	With cap	25	500
T406-3	17 x 95	Polystyrene	With cap	125	1000
T406-6	17 x 95	Polystyrene	Without cap	125	1000
T406-1A	17 x 95	Polypropylene	With cap	1	500
T406-2A	17 x 95	Polypropylene	With cap	25	500
T406-6A	17 x 95	Polypropylene	Without cap	125	1000

T415, T416, T425 & T426 Cultubes™ Sterile Culture Tubes

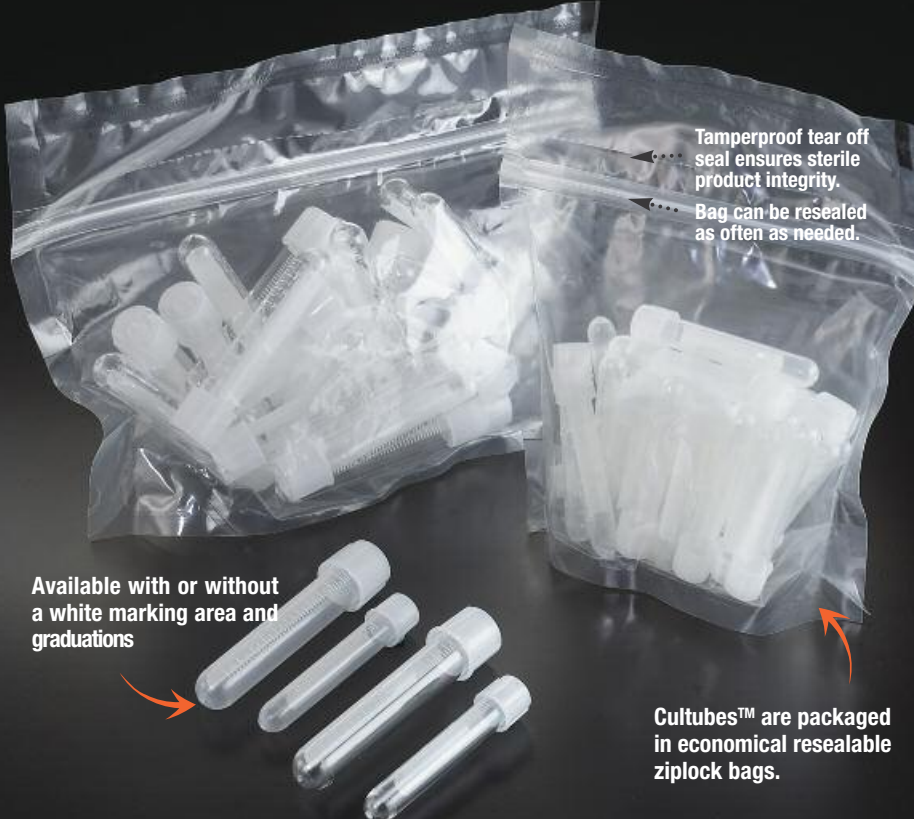
Made of polystyrene or polypropylene

These disposable sterile tubes can be used for most routine laboratory procedures. They are biologically inert and exempt from mold release agents. Precision molding with virgin thermoplastics ensures that our tubes will be uniform in size and shape. High resistance to breakage reduces danger in handling infectious or other potentially harmful cultures.

Transparent polystyrene tubes will withstand moderate centrifugation speeds (1400g) and temperatures to 80°C. Translucent polypropylene tubes can be centrifuged at higher speeds (3000g) and resist temperatures from -190 °C to 120 °C.

Tubes are supplied with either a 2-position ribbed polyethylene cap (which can be left loose for aerobic work or sealed for anaerobic cultures) or without caps for general purpose work.

For individually wrapped Cultubes™ please refer to T405-1, T405-1A, T406-1 and T406-1A previous page.



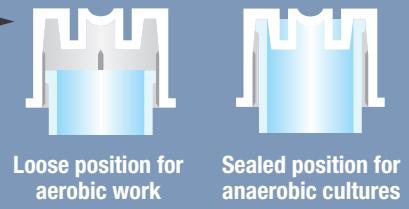
• Two-position snap cap for aerobic or anaerobic work.

• Thick wall minimizing breakage.

• Large white marking area.

• Available in transparent polystyrene or translucent polypropylene.

• Printed white graduations to facilitate volume reading*.



Pyrogen and Endotoxin Free.

* Also available without graduations.

Graduated Culture Tubes with White Marking Area

Cat. #	Size (mm)	Material	Vol	Cap	Qty/Bag	Qty/Cs
T415-2	12 x 75	PS	5	Yes	25	500
T415-3	12 x 75	PS	5	Yes	125	1000
T415-6	12 x 75	PS	5	No	125	1000
T415-2A	12 x 75	PP	5	Yes	25	500
T415-6A	12 x 75	PP	5	No	125	1000
Graduated Culture Tubes with White Marking Area						
T405-33	12 x 75	PS	5	Yes	Bulk	500

Graduated Culture Tubes with White Marking Area

Cat. #	Size (mm)	Material	Vol	Cap	Qty/Bag	Qty/Cs
T416-2	17 x 95	PS	14	Yes	25	500
T416-3	17 x 95	PS	14	Yes	125	1000
T416-6	17 x 95	PS	14	No	125	1000
T416-2A	17 x 95	PP	14	Yes	25	500
T416-6A	17 x 95	PP	14	No	125	1000
Graduated Culture Tubes with White Marking Area						
T406-33	17 x 95	PS	14	Yes	Bulk	500

Non Graduated Culture Tubes in Bulk

Cat. #	Size (mm)	Material	Vol	Cap	Qty/Bag	Qty/Cs
T425-2	12 x 75	PS	5	Yes	25	500
T425-3	12 x 75	PS	5	Yes	125	1000
T425-6	12 x 75	PS	5	No	125	1000
T425-2A	12 x 75	PP	5	Yes	25	500
T425-6A	12 x 75	PP	5	No	125	1000
Non Graduated Culture Tubes						
T425-33	12 x 75	PS	5	Yes	Bulk	500

Non Graduated Culture Tubes

Cat. #	Size (mm)	Material	Vol	Cap	Qty/Bag	Qty/Cs
T426-2	17 x 95	PS	5	Yes	25	500
T426-3	17 x 95	PS	5	Yes	125	1000
T426-6	17 x 95	PS	5	No	125	1000
T426-2A	17 x 95	PP	5	Yes	25	500
T426-6A	17 x 95	PP	5	No	125	1000
Non Graduated Culture Tubes						
T426-33	17 x 95	PS	5	Yes	Bulk	500



Phone: (450) 464-1723
Fax: (450) 464-3394

Email: info@simport.com
Website: www.simport.com

2588 Bernard-Pilon
Beloeil, Qc J3G 4S5 Canada

Distributed by: