

B720-13 & 16

SeraNest™ Sample Cups

Made of polystyrene

These sample cups will hold perfectly on top of blood collection tubes. Just pour the blood sample into a SeraNest™ and its low shoulder will hold securely on tube. No need to relabel. Two sizes available.

Cat. #	Dia.	Volume	Qty/Bag	Qty/Cs
B720-13	14 mm	1 ml	1000	5000
B720-16	16 mm	2 ml	1000	5000



B720-8

Analyzer Cups for Hitachi Systems 705, 706 & 712

Made of polystyrene

Capacity: 2 ml
Diameter: 12.5 mm
Packaged in bags of 1000, case of 10,000



B720-40 Fibrin Cups

Made of polyethylene

Precision molded for constant volume and uniform heat transfer.

Capacity: 1.3 ml, packaged in bags of 1000, case of 10,000



CONTAINERS

C200G

SputEm™

Sputum Collection System

Made of polypropylene

The ideal way to collect, carry and process biological samples. The unit features a base which already incorporates a removable sterile 50 ml graduated polypropylene conical tube that can withstand centrifugation up to 5000 RPM, or 3000g.

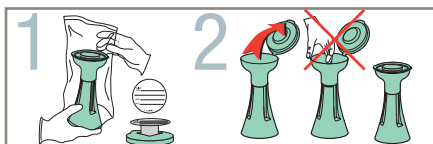


Available in a light green color, this unit is most attractive on a bedside table. Three narrow vertical windows allow the contents of the tube to be discreetly seen. A wide base ensures great stability and prevents tipping of the unit. The large collection funnel is made in such a way that specimens fall directly into the graduated centrifuge tube and do not contaminate the outside threads. The centrifuge tube screw cap is being kept sterile at all times under the snap cap on top of the funnel.

A patient label is already affixed on top of the unit and can easily be transferred to the tube before leaving for the laboratory. The base can be used as a support during transit. Each unit is sterile and individually wrapped.

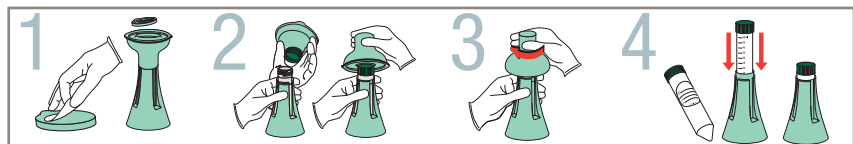
Cat. #	Color	Qty/Cs
C200G	Green	72

BEFORE COLLECTION



- Remove from package.
- Fill out patient label.
- Lift the hinged lid.
- Avoid touching inside of funnel.
- Close lid after each use.

AFTER COLLECTION



- Remove patient label and set it aside.
- Remove snap cap to expose sputum tube threaded cap.
- Remove funnel top and invert over tube.
- Squeeze middle part of Sputum Collection System and screw tube into threaded cap.
- Discard funnel top.
- Place patient label on side of tube.
- Place tube back in its base and send to lab.