

T550 & T552

Self-Standing Non Sterile Transport Tubes



5 ml



7 ml



10 ml



12 ml



30 ml

Tube made of polypropylene / Cap made of polyethylene

Designed for storage and transportation of biological material. Manufactured from non-toxic polypropylene, tubes provide strength and clarity and exhibit some unique design features. Five sizes are available from 5 to 30 ml. The T550-10ATPR tube has a white marking area to make sample identification more convenient. All graduated tubes are in 0.5 ml increments. They have external threads to provide a smooth and uniform inner surface.

A perfect leakproof seal is obtained by the use of a specially designed flexible sealing lip inside the polyethylene closures. Cap also feature a long skirt and a super fast thread design allowing them to be removed or sealed with a single turn. The most secure seal is provided by using a special cap (T550WOS, T552WOS) featuring an exclusive silicone O-ring. These caps however do not fit on the 7 ml tube. **Tubes and caps are sold separately.**

Used extensively in the following laboratories:

- Protein Chemistry
- Molecular Biology
- Tissue Culture
- Pharmaceutical
- Toxicology
- Horticulture/Agriculture
- Nutritional Science
- Food and Beverage
- Chemistry
- Biology
- Quality Control
- Immunology

Tubes

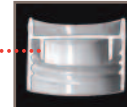
Cat. #	Dimensions (mm)*	Graduations	Volume	Qty/Pk
T552-5ATTP	16.6 x 65	Etched on tube	5 ml	1000
T552-7AT	13.4 x 84	Non graduated	7 ml	1000
T550-10AT	16.6 x 85	Non graduated	10 ml	1000
T550-10ATPR	16.6 x 85	Printed on tube	10 ml	1000
T552-10ATTP	16.6 x 84	Etched on tube	10 ml	1000
T552-12ATTP	16.6 x 102	Etched on tube	12 ml	1000
T552-30AT	25.3 x 111	Etched on tube	30 ml	5 Pk of 100 500/Cs

*For dimensions only, cap is included but should be ordered separately

SCREW CAPS SOLD SEPARATELY Tubes using T550WOS & T552WOS Caps with Silicone O-ring Seal are tested at 13.8 PSI (95 kPa)

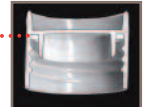
T550W & T552W

Specially designed inner lip ensures a leakproof seal



T550WOS & T552WOS

With silicone O-ring for the most secure seal



Caps

Cat. #	Description	For Tubes	Use of Capinsert	Qty/Pk
T550W	White Cap with Lip Seal	T550-10AT & -ATPR	No	1000
T550WOS	White Cap with O-ring Seal	T550-10AT & -ATPR	No	1000
T552W	White Cap with Lip Seal	T552-5ATTP, -10ATTP, -12ATTP	No	1000
T552WOS	White Cap with O-ring Seal	T552-5ATTP, -10ATTP, -12ATTP	No	1000
T552-7W*	White Cap with Lip Seal	7 ml tube	Yes	1000
T552-30W*	White Cap with Lip Seal	30 ml tube	Yes	500

*Will accept a Color Coding Capinsert™ (see page 123 for further details)

SAMPLE TUBES



T553

Urinalysis Specimen Collection Tubes

Tube made of polypropylene / Cap made of polyethylene

Simport Urinalysis Specimen Collection Tubes have a conical bottom to facilitate sample removal. Their design offers a skirted free-standing base. These graduated tubes contain a tablet of boric acid in order to preserve urine specimens for up to 72 hours without refrigeration. Offered in two popular sizes. Amber color tubes are available for light sensitive specimens. A white leakproof screw cap is supplied on each tube along with a fill line label.

Cat. #	Dimensions (mm)*	Graduations	Color	Volume	Qty/Cs
T553-10A	16.6 x 84	Etched on tube	Natural	10 ml	500
T553-10AA	16.6 x 84	Etched on tube	Amber	10 ml	500
T553-12A	16.6 x 102	Etched on tube	Natural	12 ml	500
T553-12AA	16.6 x 102	Etched on tube	Amber	12 ml	500